

Technology Coaching BvbA

Your partner to improve and innovate by understanding your:

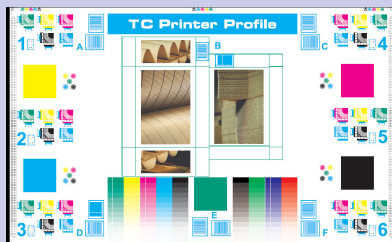
- Customers;
- Products;
- Processes;
- Suppliers.

Products:

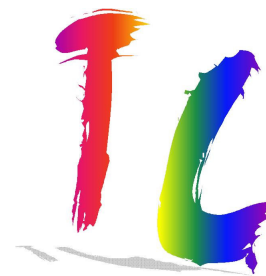
- Press Assess (Equipment productivity evaluation);
- IFT Analyzer (Screen Roll Inspection);
- ICCS (Ink formulation and colour database).

Services:

- Printing press assessment;
- Training/Coaching;
- Brand colour consistency;
- Supplier evaluation;
- Material rationalisation;
- Product development and innovation;
- Printing including: digital or on-demand printing, flexo, screen printing, gravure and offset;
- Ink utilisation evaluation;
- Cleaning procedures (screen rolls and printing tools);
- Intellectual property.



Print assessment test form



Technology Coaching BvbA

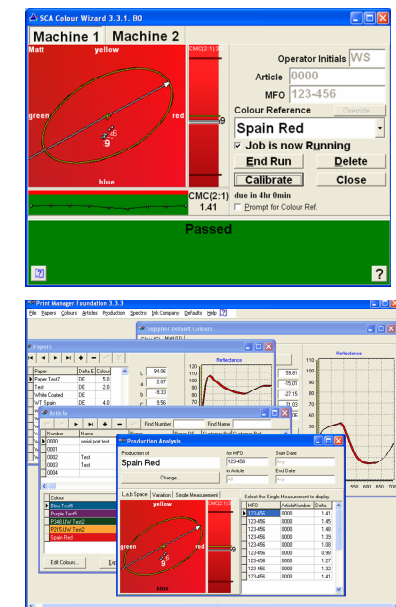
Kerkhofdreef 3/4
3001 Heverlee
Belgium

Phone: +32-16 652760
Website: www.tcbvba.be
E-mail: info@tcbvba.be



**Technology
Coaching**

Press Manager Foundation Colour Quality Assurance a better way



Technology Coaching BvbA

Phone: +32-16 652760

Press Manager Foundation

Colour consistency is a key variable by which your print customers will judge the quality of your product.

Measuring colour using a spectrophotometer is often viewed as difficult. Setting tolerances and choosing colour difference equations is not always simple. PMF manages all this. Colour tolerances and colour equations can be set by article and by colour. PMF also provides graphs of the colour consistency over time of your production runs. The colour data collection interface for collecting colour data during production is extremely user friendly and provides information that the printer understands.



Spectrophotometer

Press Manager Foundation is a suite consisting primarily of 2 programs: Print Manager and Colour wizard.

Colour Wizard provides the printer with a practical interface for collecting data during production.

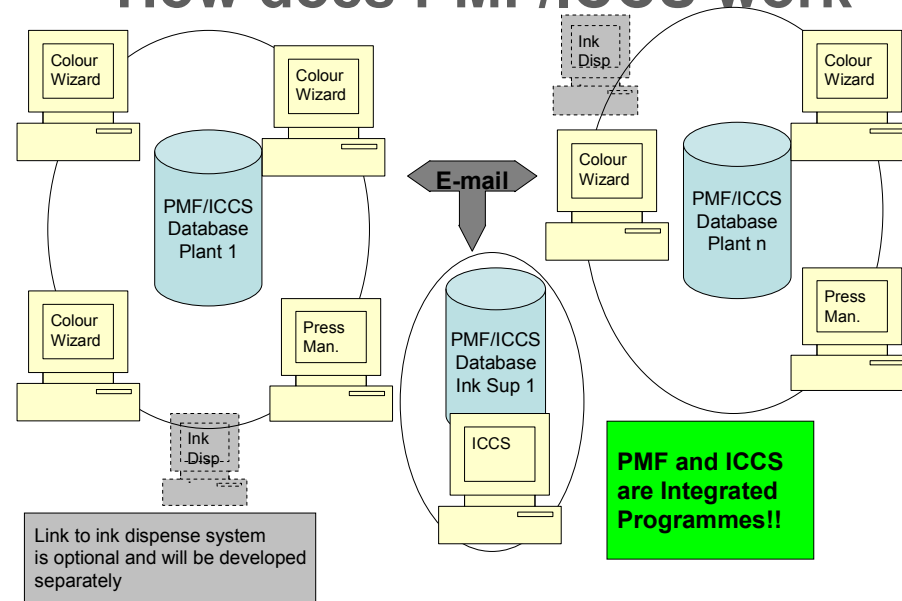
Print Manager is the interface for managing colours and articles. Print Manager can also be used by the quality department to extract colour variation information by order.

Ink suppliers use ICCS to manage ink formulations and colours. Data from PMF can be imported and exported using file transfer e.g. via E-mail.

The data collected can be exchanged via e-mail attachments. It is thus possible to share your data with your customer/supplier and discuss the results, or to use it for harmonizing colour references.

Press Manager Foundation runs under Windows 98, Me, NT4, 2000 and XP.

How does PMF/ICCS work



The measuring principle

Measuring colour is best done using a spectrophotometer. These are available in various types and at various prices. The best one for you depends on your application. PMF can work with any spectrophotometer. Currently drivers are available for Gretag Macbeth Spectrolino, Spectro Eye, X-rite 530 and Data Colour Microflash. Spectral data collected is transformed to LabCh colour space. PMF uses D65 light source, 10° viewing angle and the 1964 observer. Colour difference equations supported include CIELAB Delta E, CMC, Delta E94 and Delta E 2000.

Why use Press Manager Foundation?

Colour data, including the colour of the substrate, can be collected by positioning the instrument on the colour and pushing **one** button. PMF will provide you with the best interface for handling your colour data by article and production order.

If your operators measure at regular intervals the colour they are printing then PMF will record the colour variation during production. This hard evidence of the quality level of your

printing can then be shown to your customer.

ICCS uses the same database as PMF. The figure left shows a typical set-up of a printing company with more than one plant and a link to their ink supplier. ICCS is used for managing ink formulations that can be used for printing specific colours on a specific substrate and for a specific ink film thickness. The PMF database might be used for handling just the colour data or it might also be used to include ink formulation data too. The ink formulation data can be exported to an ink dispense system of any make or type.

Articles, colours and production data can be exported to a file, the file transmitted electronically (for example by file copy, web download or email attachment) and imported by another copy of PMF. Using PMF simply to view test results is also possible.

PMF is initially available in English but other languages are planned. Please tell us what language you require.

Do not hesitate to contact us for more information.



Technology Coaching Bvba

Kerkhofdreef 3/4
3001 Heverlee
Belgium

Phone: +32-16 652760
Website: www.tcbvba.be
E-mail: info@tcbvba.be