

Technology Coaching BvbA

Your partner to improve and innovate by understanding your:

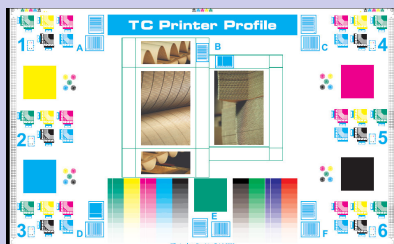
- Customers;
- Products;
- Processes;
- Suppliers.

Products:

- IFT Analyzer (Screen Roll Inspection);
- Press Manager Foundation (Colour Quality assurance);
- ICCS (Ink formulation and colour database).

Services:

- Printing press assessment;
- Training/Coaching;
- Brand colour consistency;
- Supplier evaluation;
- Material rationalisation;
- Product development and innovation;
- Printing including: digital or on-demand printing, flexo, screen printing, gravure and offset;
- Ink utilisation evaluation;
- Cleaning procedures (screen rolls and printing tools);
- Intellectual property.



Print assessment test form



Technology Coaching BvbA

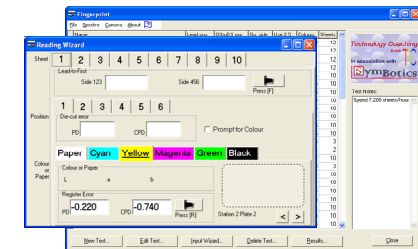
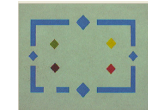
Kerkhofdreef 3/4
3001 Heverlee
Belgium

Phone: +32-16 652760
Website: www.tcbvba.be
E-mail: info@tcbvba.be



**Technology
Coaching**

Press Assess - A better way to evaluate Printing Equipment



Technology Coaching BvbA

Phone: +32-16 652760

Press Assess

Press Assess is a software tool for evaluating your printing equipment in terms of:

1. Colour to colour register variation;
2. Print to structure register variation;
3. Lead edge to first colour variation;
4. Colour variation;
5. Ink transfer variation.

The data collection is done using a spectrophotometer for measuring colour data and a high resolution fire wire digital camera for measuring register data (manual input of register data is also possible). The data collection input wizard is extremely easy to operate.

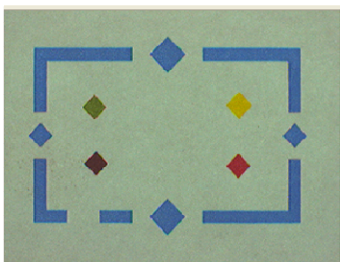


Image 5 Colour Register Reference

The data collected can be corrected for operator influence.

The results are presented in easy to understand graphs and summary statistics.

Press Assess is available in 8 languages (English, German, French, Spanish Dutch, Italian, Swedish, Greek). On request more languages can be added.

The data collected can be exchanged via e-mail attachments. It is thus possible to share your data with your customer/supplier and discuss the performance of your printing equipment..

The measuring equipment and print test form is optional available.

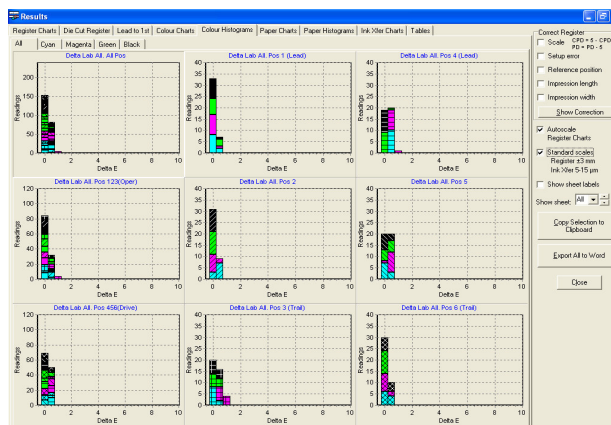
Press Assess runs under Windows 98, Me, NT4, 2000 and XP.

The measuring principle

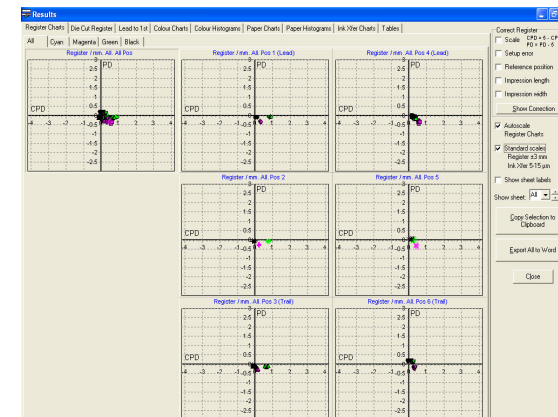
For the testing a special designed Press Assess print test form is used (See the back of this brochure). It contains 6 positions, 3 on Operator side and 3 on drive side for collecting register and colour data (See back of brochure). The test can be done for as many colours as you want how ever the digital camera can currently measure 5 colours and in future 8. More colours is possible on request. The test form is used as a normal print job. A number of consecutive printed sheets are taken from the run preferably 10 or more. The Colour data is collected using the spectrophotometer the register data including lead edge to first colour is collected using a digital camera and a specially designed register element.

Why use Press Assess?

When purchasing new printing equipment or looking at the status of existing printing equipment it is important to understand its capability quantitatively. The Press Assessment software and test procedure will provide this information. It is thus possible to compare equipment in terms of register variation and colour variation. The test can also be used during commissioning of printing equipment to see if the equipment meets its specifications. If existing equipment is upgrade or maintained then the test can provide valuable information about the effect the upgrade and/or maintenance had on the improvement of the printing equipment in terms of register variation and colour variation.



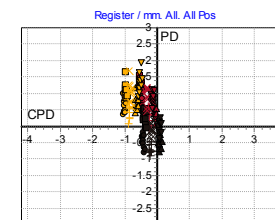
Screen Shot Colour Variation Results



Screen Shot Colour to colour register Variation Results

The combination of the digital camera and the register element allow a measuring accuracy for colour to colour register of ± 0.012 mm (or less).

The program calculates register offset correction, stretching and skew between print stations. It is also possible to do an ink transfer evaluation using a reference print test with an ink sample taken from the test.



Exporting of graphs to a document is easy.



Technology Coaching Bvba

Kerkhofdreef 3/4
3001 Heverlee
Belgium

Phone: +32-16 652760
Website: www.tcbvba.be
E-mail: info@tcbvba.be